

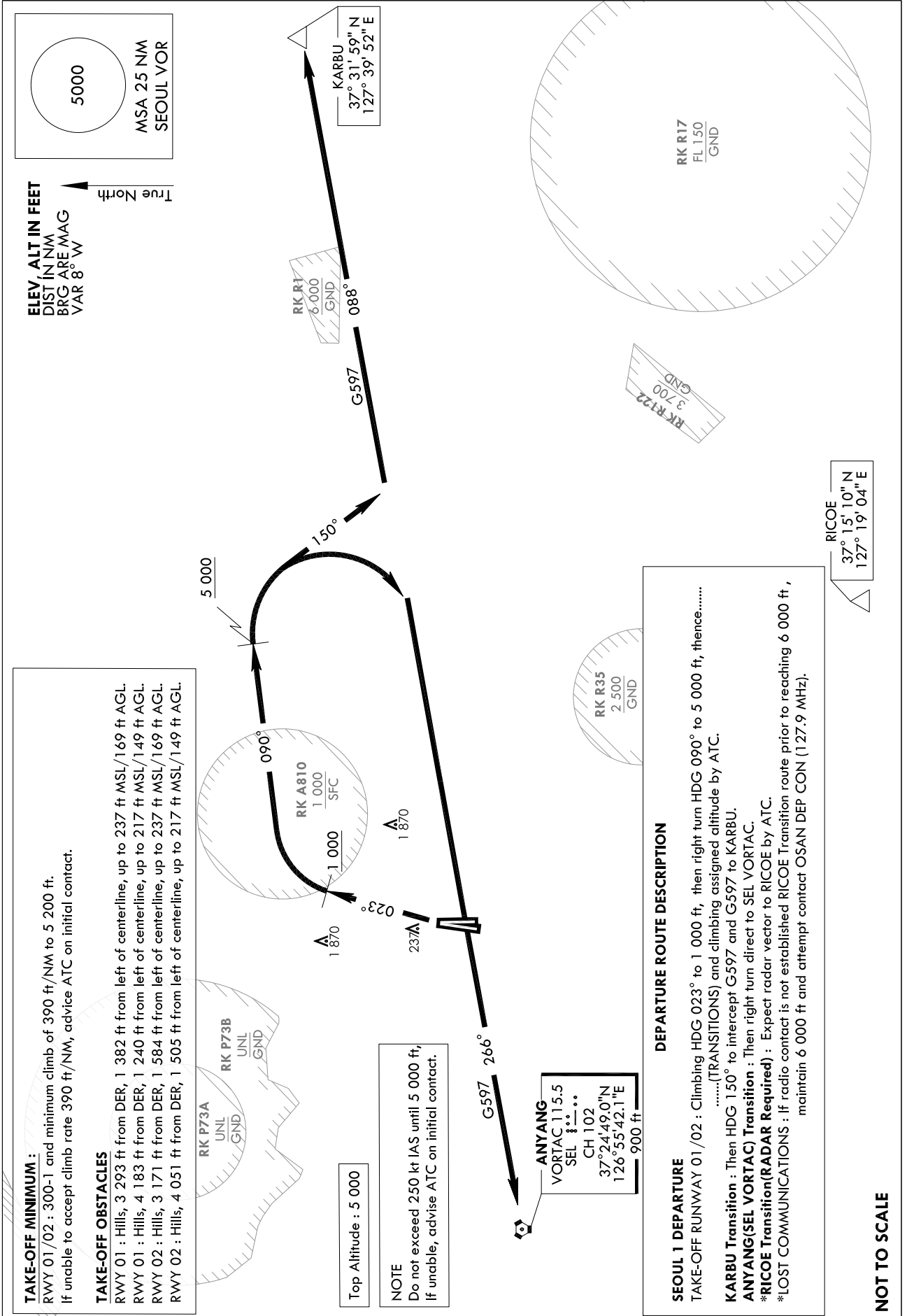
STANDARD DEPARTURE  
CHART - INSTRUMENT(SID)

TRANSITION ALT 14 000  
TRANSITION LVL FL 140

SEOUL DEP 123.8 363.8  
SEOUL TWR 126.2 234.5 236.6

SEOUL/Seoul (RKSM)  
RWY 01/02  
SEOUL 1

Note : Departure under U.S. TERPS.



Change : Amended phrases.

**INTENTIONALLY**

**LEFT**

**BLANK**

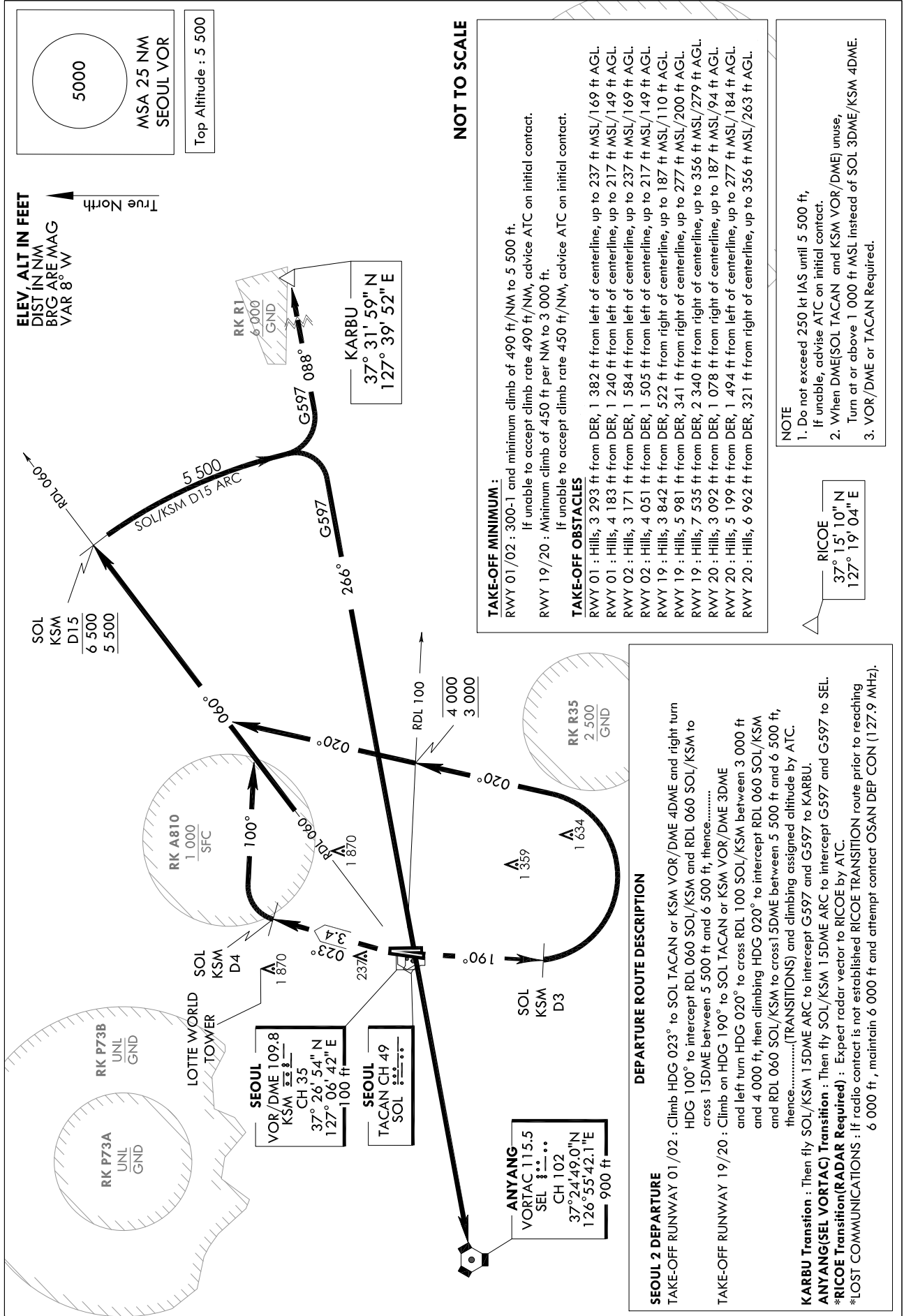
STANDARD DEPARTURE  
CHART - INSTRUMENT(SID)

TRANSITION ALT 14 000  
TRANSITION LVL FL 140

SEOUL DEP 123.8 363.8  
SEOUL TWR 126.2 234.5 236.6

SEOUL/Seoul (RKSM)  
RWY 01/02, RWY 19/20  
SEOUL 2

Note : Departure under U.S. TERPS.



Change : New procedure.

**INTENTIONALLY**

**LEFT**

**BLANK**

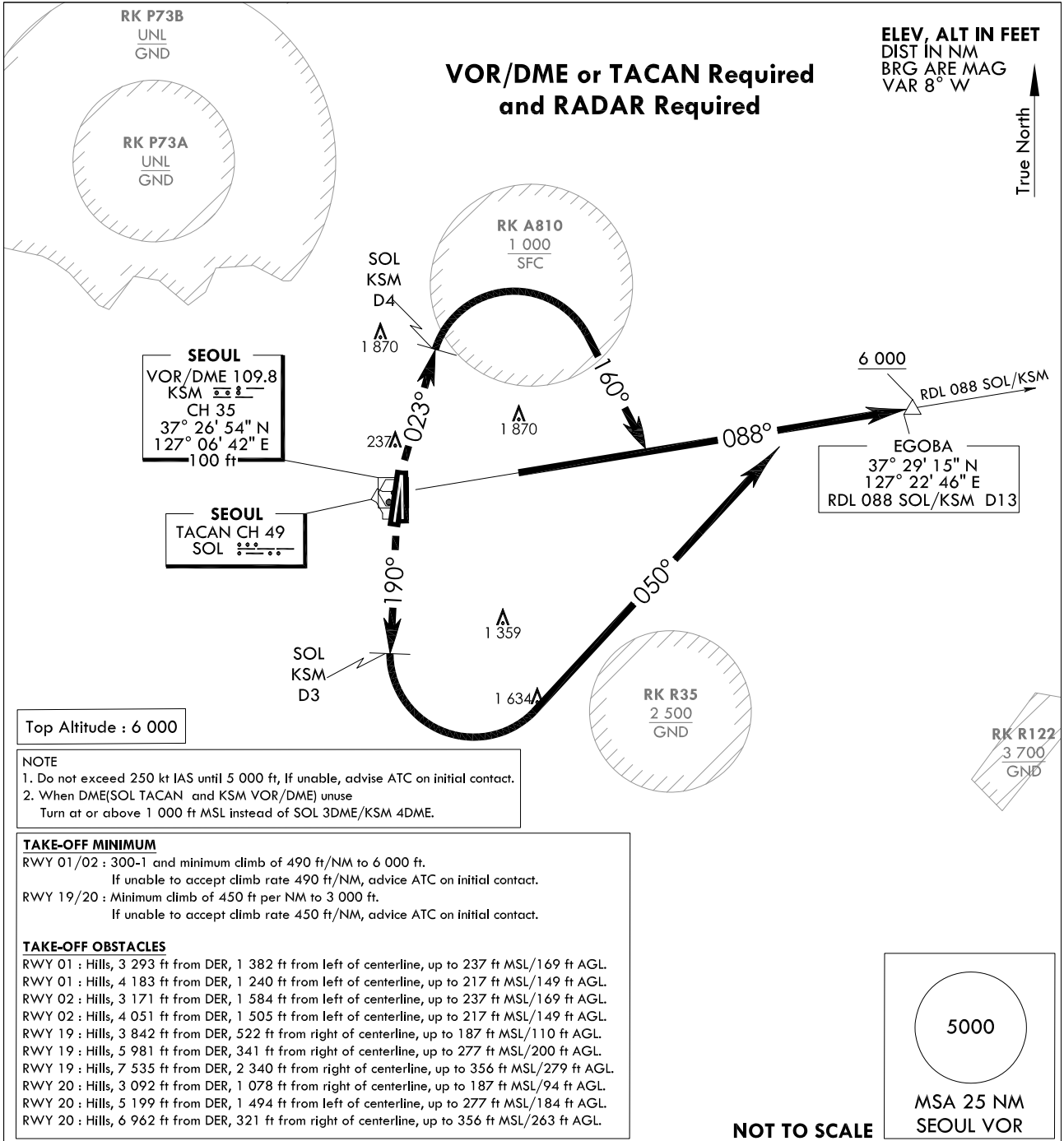
**STANDARD DEPARTURE  
CHART - INSTRUMENT(SID)**

TRANSITION ALT 14 000  
TRANSITION LVL FL 140

SEOUL DEP 123.8 363.8  
SEOUL TWR 126.2 234.5 236.6

**SEOUL/Seoul (RKSM)  
RWY 01/02, RWY 19/20  
EGOBA 5**

Note : Departure under U.S. TERPS.



**DEPARTURE ROUTE DESCRIPTION**

**EGOBA 5 DEPARTURE**

TAKE-OFF RUNWAY 01/02 : Climb HDG 023° to SOL or KSM 4DME  
and climbing right turn HDG 160° to intercept RDL 088 SOL/KSM and  
RDL 088 SOL/KSM to cross EGOBA at or above 6 000 ft.

TAKE-OFF RUNWAY 19/20 : Climb HDG 190° to SOL or KSM 3DME  
and climbing left turn HDG 050° to intercept RDL 088 SOL/KSM and  
RDL 088 SOL/KSM to cross EGOBA at or above 6 000 ft.

Change : Amended phrases.

**INTENTIONALLY**

**LEFT**

**BLANK**

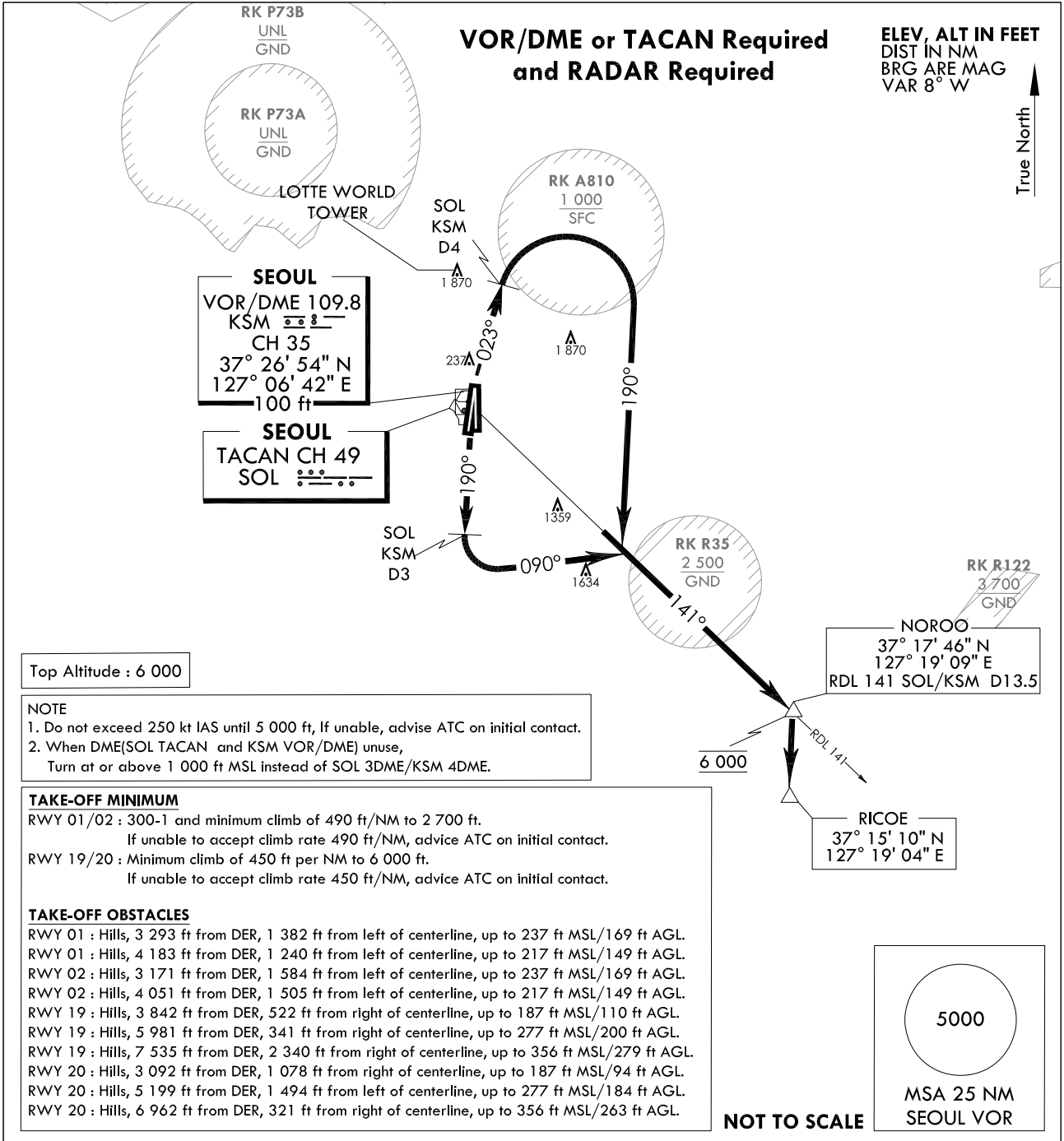
**STANDARD DEPARTURE  
CHART - INSTRUMENT(SID)**

TRANSITION ALT 14 000  
TRANSITION LVL FL 140

SEOUL DEP 123.8 363.8  
SEOUL TWR 126.2 234.5 236.6

**SEOUL/Seoul (RKSM)  
RWY 01/02, RWY 19/20  
RICOE 5**

Note : Departure under U.S. TERPS.



Top Altitude : 6 000

**NOTE**  
1. Do not exceed 250 kt IAS until 5 000 ft, If unable, advise ATC on initial contact.  
2. When DME(SOL TACAN and KSM VOR/DME) unuse,  
Turn at or above 1 000 ft MSL instead of SOL 3DME/KSM 4DME.

**TAKE-OFF MINIMUM**  
RWY 01/02 : 300-1 and minimum climb of 490 ft/NM to 2 700 ft.  
If unable to accept climb rate 490 ft/NM, advice ATC on initial contact.  
RWY 19/20 : Minimum climb of 450 ft per NM to 6 000 ft.  
If unable to accept climb rate 450 ft/NM, advice ATC on initial contact.

**TAKE-OFF OBSTACLES**  
RWY 01 : Hills, 3 293 ft from DER, 1 382 ft from left of centerline, up to 237 ft MSL/169 ft AGL.  
RWY 01 : Hills, 4 183 ft from DER, 1 240 ft from left of centerline, up to 217 ft MSL/149 ft AGL.  
RWY 02 : Hills, 3 171 ft from DER, 1 584 ft from left of centerline, up to 237 ft MSL/169 ft AGL.  
RWY 02 : Hills, 4 051 ft from DER, 1 505 ft from left of centerline, up to 217 ft MSL/149 ft AGL.  
RWY 19 : Hills, 3 842 ft from DER, 522 ft from right of centerline, up to 187 ft MSL/110 ft AGL.  
RWY 19 : Hills, 5 981 ft from DER, 341 ft from right of centerline, up to 277 ft MSL/200 ft AGL.  
RWY 19 : Hills, 7 535 ft from DER, 2 340 ft from right of centerline, up to 356 ft MSL/279 ft AGL.  
RWY 20 : Hills, 3 092 ft from DER, 1 078 ft from right of centerline, up to 187 ft MSL/94 ft AGL.  
RWY 20 : Hills, 5 199 ft from DER, 1 494 ft from left of centerline, up to 277 ft MSL/184 ft AGL.  
RWY 20 : Hills, 6 962 ft from DER, 321 ft from right of centerline, up to 356 ft MSL/263 ft AGL.

NOT TO SCALE

5000  
MSA 25 NM  
SEOUL VOR

**DEPARTURE ROUTE DESCRIPTION**

**RICOE 5 DEPARTURE**  
TAKE-OFF RUNWAY 01/02 : Climb HDG 023° to SOL or KSM 4DME and climbing right turn HDG 190° to intercept RDL 141 SOL/KSM and RDL 141 SOL/KSM to cross NOROO at 6 000 ft, then expect radar vector to RICOE or filed En-route fix by ATC.  
TAKE-OFF RUNWAY 19/20 : Climb HDG 190° to SOL or KSM 3DME and climbing left turn HDG 090° to intercept RDL 141 SOL/KSM and RDL 141 SOL/KSM to cross NOROO at 6 000 ft, then expect radar vector to RICOE or filed En-route fix by ATC.

Change : New procedure.

**INTENTIONALLY**

**LEFT**

**BLANK**



**STANDARD DEPARTURE CHART  
INSTRUMENT (SID)**

TRANSITION ALT 14 000  
TRANSITION LVL FL 140

SEOUL DEP 123.8 363.8  
SEOUL TWR 126.2  
236.6 234.5

**SEOUL/Seoul (RKSM)  
RWY 01/02  
RNAV MEESA 1**

Note : Departure under U.S TERPS.

**TAKE-OFF OBSTACLE :**

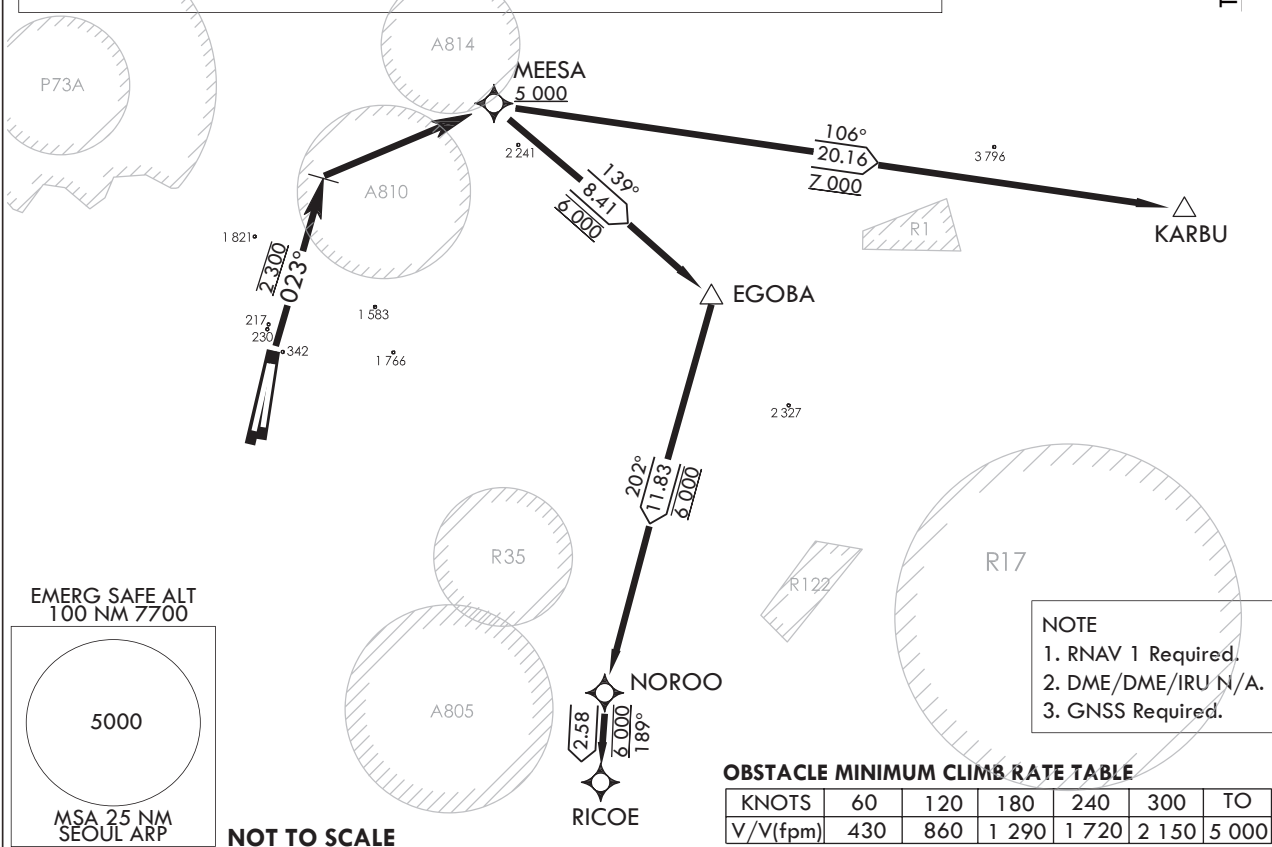
RWY 01 : Hills, 3 321 ft from DER, 1 411 ft from left of centerline,  
up to 230 ft AMSL/161 ft AGL.  
RWY 01 : Terrain, 1 964 ft from right of RWY 01 centerline, up to 342 ft AMSL/273 ft AGL.  
RWY 02 : Terrain, 2 181 ft from right of RWY 02 centerline, up to 342 ft AMSL/250 ft AGL.

**TAKE-OFF MINIMUM :**

RWY 01/02 : 300-1 and minimum climb of 430 ft/NM to 5 000 ft.

**ELEV, ALT IN FEET  
DIST IN NM  
BRG ARE MAG  
VAR 8°W**

True North ↑



**DEPARTURE PROCEDURE DESCRIPTION**

**RNAV MEESA 1 DEPARTURE**

TAKE-OFF RUNWAY 01/02 : Climb on HDG 023° to 2 300 ft, then right turn direct MEESA,  
cross MEESA at or above 5 000 ft, thence.....  
.....(transition) maintain 6 000 ft, expect filed altitude 10 minutes after departure.

**KARBU TRANSITION :** Track 106 to KARBU and climb to assigned altitude.

**EGOBA TRANSITION :** Track 139 to EGOBA and climb to assigned altitude.

**RICOE TRANSITION :** Track 139 to EGOBA and Track 202 to NOROO and Track 189 to RICOE  
and climb to assigned altitude.

SEOUL/Seoul (RKSM)  
RWY 01/02  
RNAV MEESA 1

AERONAUTICAL DATA TABULATION

Standard Instrument Departure Procedure Coding Tables

**RNAV MEESA 1**

Serial Number	Path Descriptor	Waypoint Identifier	Fly -Over	Course/Track ° M(° T)	Distance (NM)	Turn Direction	Altitude (ft)	Speed (kt)	Coordinates	VPA /TCH	Navigation specification	Remarks
001	VA	-	-	Heading 023°	-	-	@2 300	-250	-	-	RNAV1	
002	DF	MEESA	-	-	-	R	+5 000	-250	373443.8679N 1271444.7752E	-	RNAV1	

**Feeder Routes**

Serial Number	Path Descriptor	Waypoint Identifier	Fly -Over	Course/Track ° M(° T)	Distance (NM)	Turn Direction	Altitude (ft)	Speed (kt)	Coordinates	VPA /TCH	Navigation specification	Remarks
001	DF	MEESA	-	-	-	-	+5 000	-	373443.8679N 1271444.7752E	-	RNAV1	
002	TF	KARBU	-	106°/98°	20.16	R	+7 000	-	373159N 1273952E	-	-	

**Feeder Routes**

Serial Number	Path Descriptor	Waypoint Identifier	Fly -Over	Course/Track ° M(° T)	Distance (NM)	Turn Direction	Altitude (ft)	Speed (kt)	Coordinates	VPA /TCH	Navigation specification	Remarks
001	DF	MEESA	-	-	-	-	+5 000	-250	373443.8679N 1271444.7752E	-	RNAV1	
002	TF	EGOBA	-	139°/131°	8.41	R	@6 000	-	372915N 1272246E	-	RNAV1	
003	TF	NOROO	-	202°/194°	11.83	R	@6 000	-	371745.54N 1271908.61E	-	RNAV1	
004	TF	RICOE	-	189°/181°	2.58	L	@6 000	-	371510.31N 1271903.56E	-	RNAV1	

Change : Page control.

**STANDARD DEPARTURE CHART  
INSTRUMENT (SID)**

TRANSITION ALT 14 000  
TRANSITION LVL FL 140

SEOUL	DEP	123.8	363.8
SEOUL	TWR	126.2	
		236.6	234.5

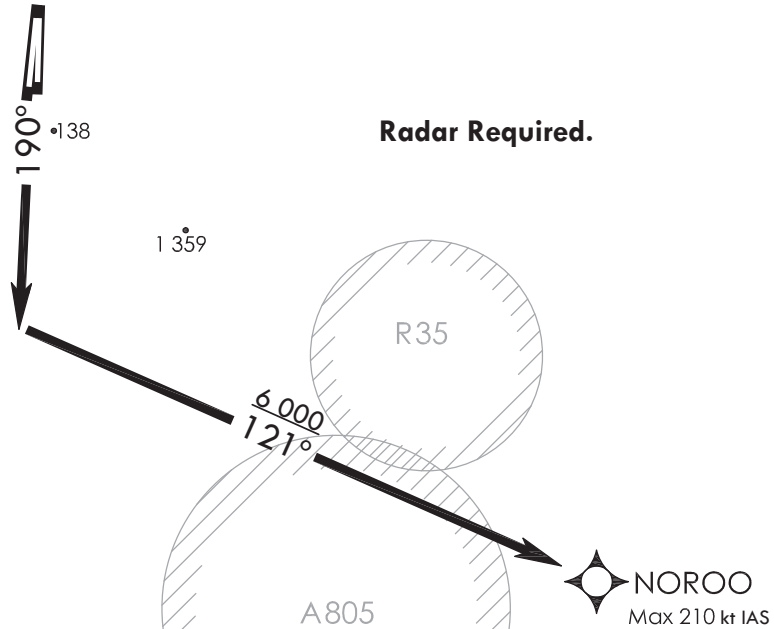
**SEOUL/Seoul (RKSM)**  
RWY 19/20  
RNAV NOROO 1

Note : Departure under U.S TERPS.

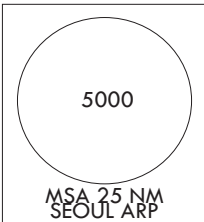
**OBSTACLE MINIMUM CLIMB RATE TABLE**

KNOTS	60	120	180	240	300	TO
V/V(fpm)	430	860	1 290	1 720	2 150	5 000

**ELEV, ALT IN FEET**  
DIST IN NM  
BRG ARE MAG  
VAR 8°W



EMERG SAFE ALT  
100 NM 7700



**NOT TO SCALE**

**TAKE-OFF MINIMUM :**

RWY 19/20 : Standard with minimum climb of 500 ft/NM to 3 000.

**NOTE**

1. RNAV 1 Required.
2. DME/DME/IRU N/A.
3. GNSS Required.
4. If unable to accept climb rate, advise ATC on initial contact.
5. Limit NOROO to maximum 210 kt IAS, if unable advise ATC on initial contact.

**DEPARTURE PROCEDURE DESCRIPTION**

**RNAV NOROO 1 DEPARTURE**

TAKE-OFF RUNWAY 19/20 : Climb HDG 190° to intercept course 121 to NOROO and climb to 6 000 ft, hence climb on assigned heading for radar vector.

SEOUL/Seoul (RKSM)  
 RWY 19/20  
 RNAV NOROO 1

AERONAUTICAL DATA TABULATION

Standard Instrument Departure Procedure Coding Tables

RNAV NOROO 1

Serial Number	Path Descriptor	Waypoint Identifier	Fly -Over	Course/Track ° M(° T)	Distance (NM)	Turn Direction	Altitude (ft)	Speed (kt)	Coordinates	VPA /TCH	Navigation specification	Remarks
001	VI	-	-	Heading 190°	-	-	-	-210	-	-	RNAV1	Bank angle 20°
002	CF	NOROO	-	121°/113°	-	L	+6 000	-210	371745.54N 1271908.61E	-	RNAV1	Bank angle 20°

Change : Page control.

**STANDARD DEPARTURE CHART  
INSTRUMENT (SID)**

TRANSITION ALT 14 000  
TRANSITION LVL FL 140

SEOUL DEP 123.8 363.8  
SEOUL TWR 126.2  
236.6 234.5

**SEOUL/Seoul (RKSM)  
RWY 19/20  
RNAV SONGTAN 1**

Note : Departure under U.S TERPS.

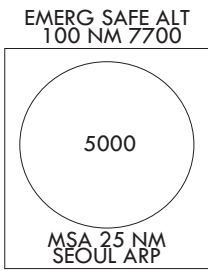
**OBSTACLE MINIMUM CLIMB RATE TABLE**

KNOTS	60	120	180	240	300	TO
V/V(fpm)	500	1 000	1 500	2 000	2 500	5 000

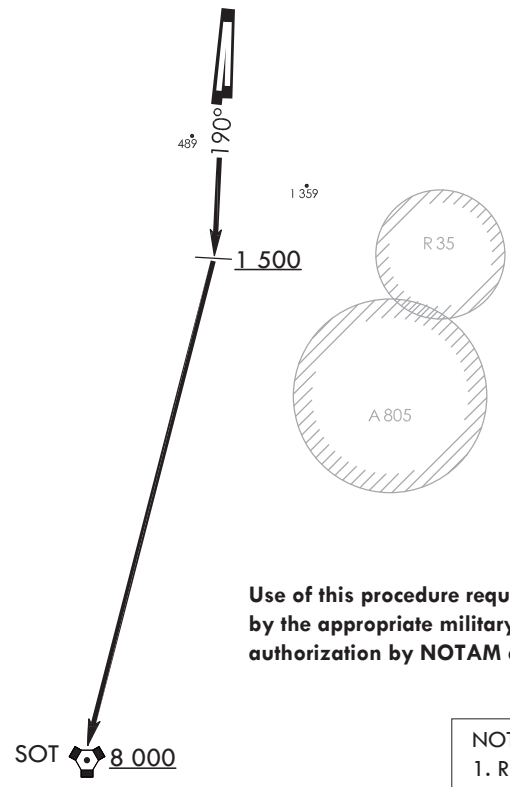
**TAKE-OFF MINIMUM :**

RWY 19/20 : 500-1¼ with minimum climb of 500 ft/NM to 5 000.

**ELEV, ALT IN FEET  
DIST IN NM  
BRG ARE MAG  
VAR 8°W**



**NOT TO SCALE**



**Use of this procedure require specific authorization  
by the appropriate military authority and  
authorization by NOTAM about airspace control.**

- NOTE**
1. RNAV 1 Required.
  2. DME/DME/IRU N/A.
  3. GNSS Required.
  4. If unable to accept climb rate, advise ATC on initial contact.

**DEPARTURE PROCEDURE DESCRIPTION**

**RNAV SONGTAN 1 DEPARTURE**

TAKE-OFF RUNWAY 19/20 : Climb HDG 190° to 1 500 ft, then right turn direct SOT(SONGTAN VORTAC) and climb assigned altitude.

SEOUL/Seoul (RKSM)  
 RWY 19/20  
 RNAV SONGTAN 1

AERONAUTICAL DATA TABULATION

Standard Instrument Departure Procedure Coding Tables

RNAV SONGTAN 1

Serial Number	Path Descriptor	Waypoint Identifier	Fly -Over	Course/Track ° M(° T)	Distance (NM)	Turn Direction	Altitude (ft)	Speed (kt)	Coordinates	VPA /TCH	Navigation specification	Remarks
001	VA	-	-	Heading 190°	-	-	+1 500	-	-	-	RNAV1	ICA
002	CF	SOT	-	-	-	R	+8 000	-	370540N 1270154E	-	RNAV1	

Change : Page control.

**STANDARD DEPARTURE CHART  
INSTRUMENT (SID)**

TRANSITION ALT 14 000  
TRANSITION LVL FL 140

SEOUL DEP	123.8	363.8
SEOUL TWR	126.2	
	236.6	234.5

**SEOUL/Seoul (RKSM)  
RWY 19/20  
RNAV YEOJU 1**

Note : Departure under U.S TERPS.

**OBSTACLE MINIMUM CLIMB RATE TABLE**

KNOTS	60	120	180	240	300	TO
V/V(fpm)	500	1 000	1 500	2 000	2 500	5 000

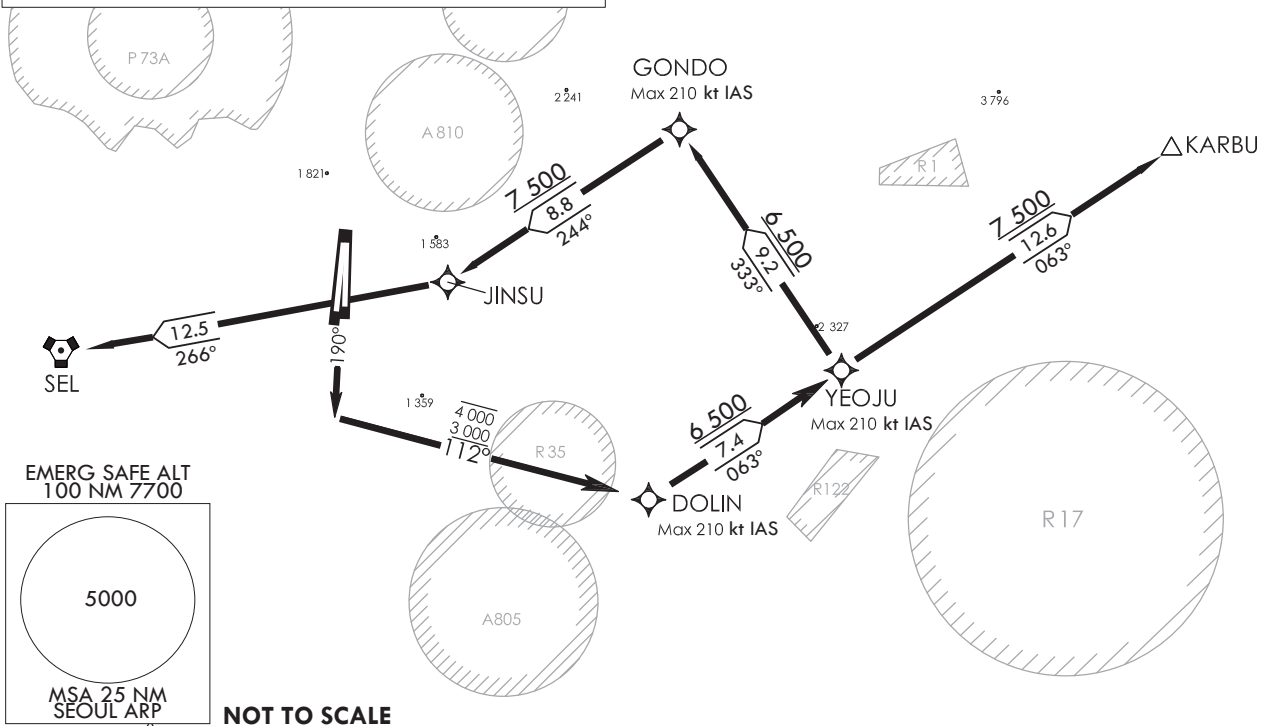
**TAKE-OFF MINIMUM :**

RWY 19/20 : standard with minimum climb of 500 ft/NM to 4 000.

**NOTE**

1. RNAV 1 Required.
2. DME/DME/IRU N/A.
3. GNSS Required.
4. If unable to accept climb rate, advise ATC on initial contact.
5. Limit DOLIN, YEOJU, GONDO to maximum 210 kt IAS, if unable advise ATC on initial contact.

**ELEV, ALT IN FEET  
DIST IN NM  
BRG ARE MAG  
VAR 8°W**



**DEPARTURE PROCEDURE DESCRIPTION**

**RNAV YEOJU 1 DEPARTURE**

TAKE-OFF RUNWAY 19/20 : Climb HDG 190° to intercept course 112 to DOLIN, and left turn, track 063 to YEOJU, THENCE....  
.....(transition) maintain 6 500 ft, expect filed altitude 10 minutes after departure.

**KARBU TRANSITION :** Track 063 to KARBU and climb to assigned altitude.

**ANYANG(SEL VORTAC) TRANSITION:** Track 333 to GONDO and left turn track 244 to JINSU and right turn track 266 to ANYANG(SEL VORTAC) and climb to assigned altitude.

SEOUL/Seoul (RKSM)  
RWY 19/20  
RNAV YEOJU 1

AERONAUTICAL DATA TABULATION

Standard Instrument Departure Procedure Coding Tables

RNAV YEOJU 1

Serial Number	Path Descriptor	Waypoint Identifier	Fly -Over	Course/Track ° M(° T)	Distance (NM)	Turn Direction	Altitude (ft)	Speed (kt)	Coordinates	VPA /TCH	Navigation specification	Remarks
001	VI	-	-	Heading 190°	-	-	-	-210	-	-	RNAV1	Bank angle 20°
002	CF	DOLIN	-	112°/104°	-	L	-4 000 +3 000	-210	372033.2627N 1271914.4699E	-	RNAV1	Bank angle 20°
003	TF	YEOJU	-	063°/055.1°	7.37	-	+6 500	-210	372446.4249N 1272649.8755E	-	RNAV1	Bank angle 20°

Feeder Routes

Serial Number	Path Descriptor	Waypoint Identifier	Fly -Over	Course/Track ° M(° T)	Distance (NM)	Turn Direction	Altitude (ft)	Speed (kt)	Coordinates	VPA /TCH	Navigation specification	Remarks
001	TF	YEOJU	-	-	-	-	+6 500	-210	372446.4249N 1272649.8755E	-	RNAV1	Bank angle 20°
002	TF	GONDO	-	333°/325.2°	9.23	L	+6 500	-210	373221.2835N 1272012.3799E	-	RNAV1	Bank angle 20°
003	TF	JINSU	-	244°/235.6°	8.82	R	+7 500	-	372721.3430N 1271104.2073E	-	RNAV1	
004	TF	SEL	-	266°/258.4°	12.5	-	-	-	372449N 1265542E	-	RNAV1	ENROUTE

Feeder Routes

Serial Number	Path Descriptor	Waypoint Identifier	Fly -Over	Course/Track ° M(° T)	Distance (NM)	Turn Direction	Altitude (ft)	Speed (kt)	Coordinates	VPA /TCH	Navigation specification	Remarks
001	TF	YEOJU	-	-	-	-	+6 500	-210	372446.4249N 1272649.8755E	-	RNAV1	
002	TF	KARBU	-	063°/055.1°	12.6	R	+7 500	-	373159N 1273952E	-	RNAV1	ENROUTE